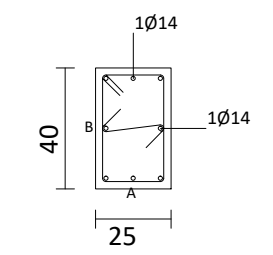
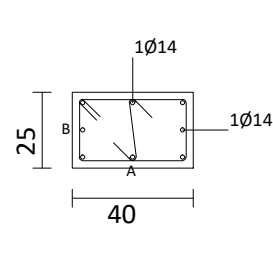
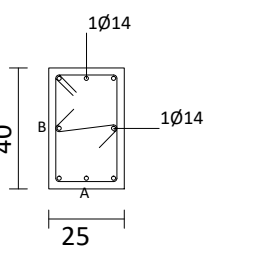
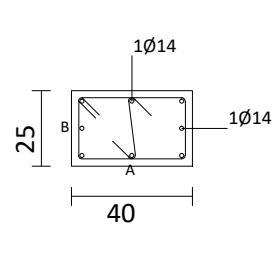
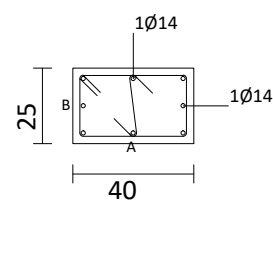
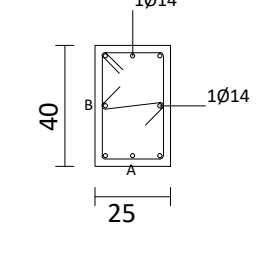
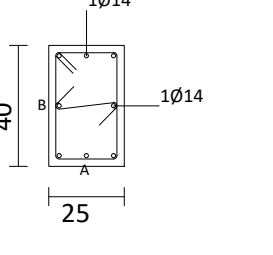
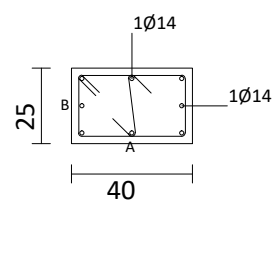
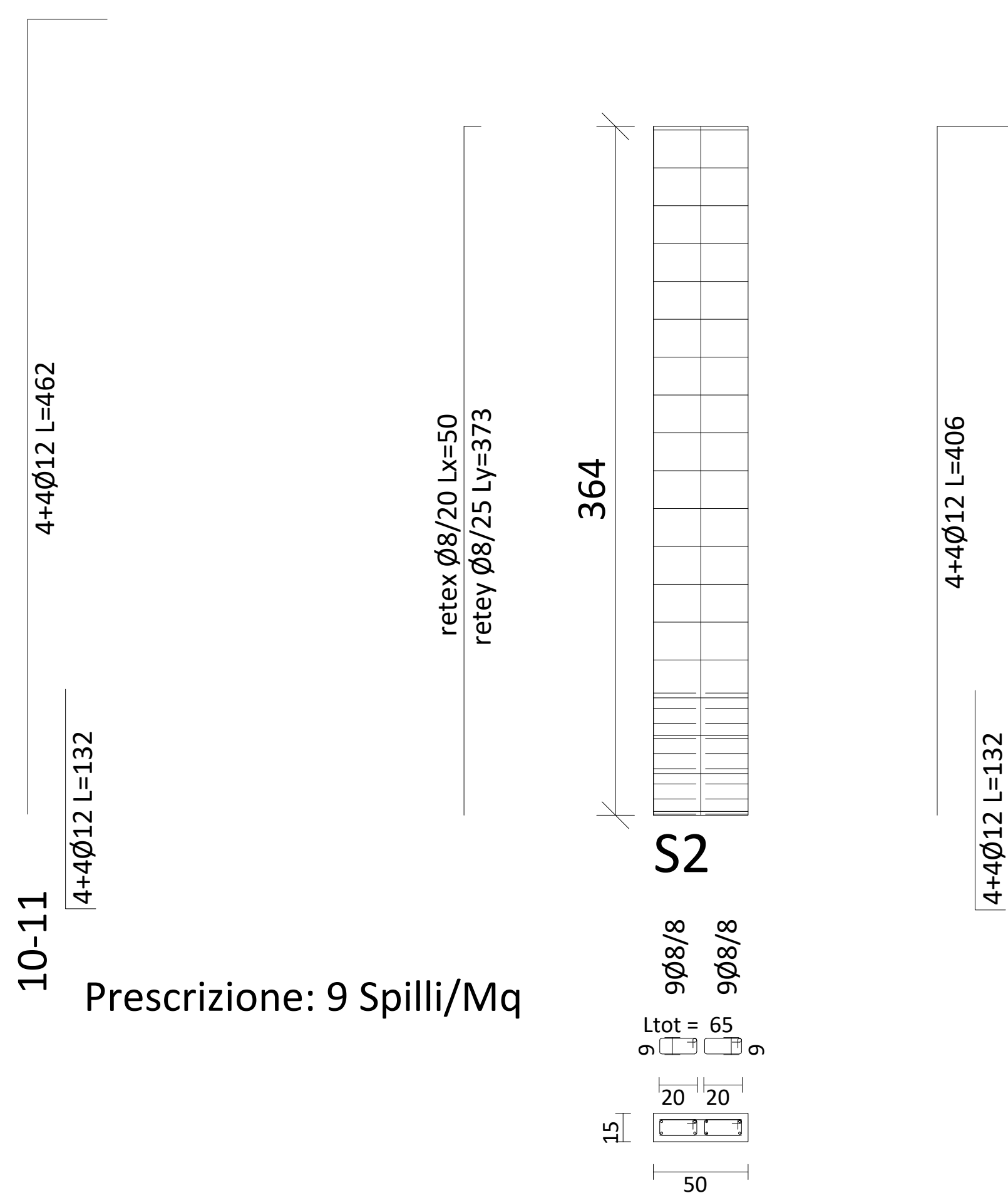
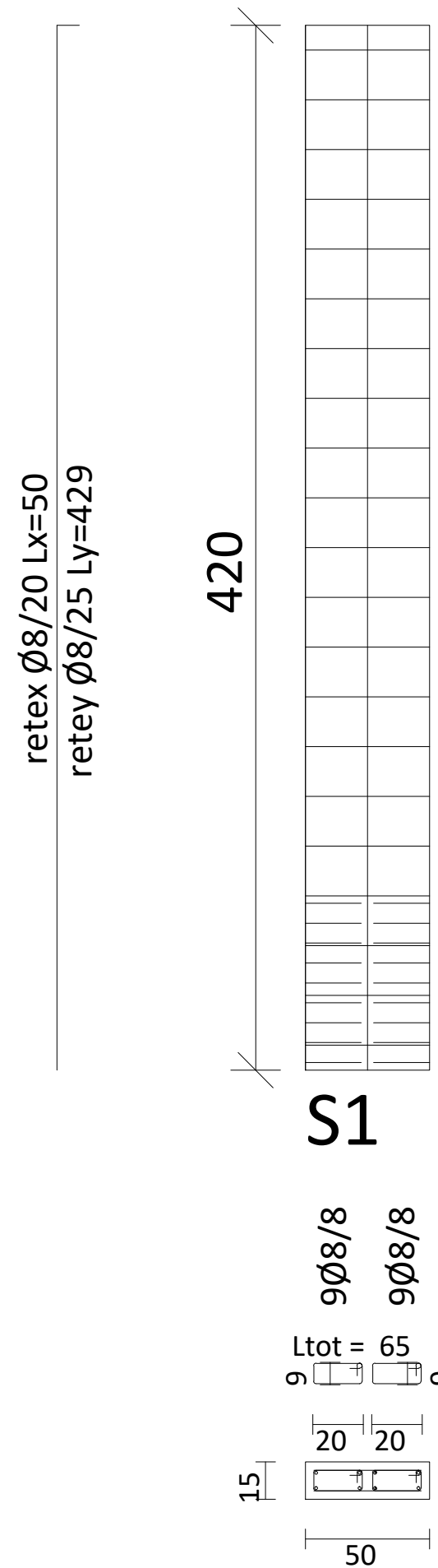


TABELLA PILASTRI

PIL.		PIL.		PIL.		PIL.	
1	L=280 L.FER=310 SPIGOLI 4Ø14  STAFFE: 21*36 LTOT=126 Ø8/11 L= 86 Ø8/16 L= 144 Ø8/11 L= 50	3	L=365 L.FER=395 SPIGOLI 4Ø14  STAFFE: 36*21 LTOT=126 Ø8/11 L= 90 Ø8/16 L= 213 Ø8/11 L= 62	5	L=280 L.FER=308 SPIGOLI 4Ø14  STAFFE: 21*36 LTOT=126 Ø8/11 L= 87 Ø8/16 L= 131 Ø8/11 L= 62	7	L=420 L.FER=444 SPIGOLI 4Ø14  STAFFE: 36*21 LTOT=126 Ø8/11 L= 106 Ø8/16 L= 236 Ø8/11 L= 78
2	L=420 L.FER=444 SPIGOLI 4Ø14  STAFFE: 36*21 LTOT=126 Ø8/11 L= 106 Ø8/16 L= 238 Ø8/11 L= 76	4	L=280 L.FER=310 SPIGOLI 4Ø14  STAFFE: 21*36 LTOT=126 Ø8/10 L= 40 Ø8/11 L= 45 Ø8/16 L= 128 Ø8/11 L= 67	6 9	L=280 L.FER=310 SPIGOLI 4Ø14  STAFFE: 21*36 LTOT=126 Ø8/11 L= 86 Ø8/16 L= 144 Ø8/11 L= 50	8	L=364 L.FER=390 SPIGOLI 4Ø14  STAFFE: 36*21 LTOT=126 Ø8/11 L= 94 Ø8/16 L= 204 Ø8/11 L= 66



Comune di Giovinazzo

(Città Metropolitana di Bari)

Settore Gestione del Territorio
Assessorato OO.PP. e LL.PP.

Progetto: Realizzazione di Velostazione "FRANCO BALLERINI" in Piazzetta Stallone

Progettista: ing. Vincenzo Giuseppe SURIANO

R.U.P.: Ing. Cesare TREMATORE

TAV. ST 4

CONTENUTO: TABELLA PILASTRI
CARPENTERIA E ARMATURA SETTI